

JOLIET Police Department



Internal Affairs Unit

2012 Year-end Report

Prepared by: Lieutenant Marc Reid #25



The Internal Affairs Unit is charged with the task of investigating and managing complaints about misconduct or performance alleged against members both civilian and sworn of the Police Department. Minor complaints may be assigned to the accused members shift supervisor for investigation. All members will comply with the rules, regulations, directives, and orders of the Department. Sworn members will be held strictly accountable for properly exercising the authority they have been given to protect the rights, lives, and property of all individuals. At the same time, members must be protected against false allegations of misconduct. These requirements can only be accomplished through a consistently competent and thorough investigative process.

A valid complaint can come from both an external and internal source that includes, but is not limited to web based, walk-in, mail, telephone, anonymous, and Department employees. A complaint must be:

- An allegation from any source of circumstance(s) amounting to a specific act or omission which if proven true would amount to employee misconduct, or
- An expression of dissatisfaction from an external source with a policy, procedure, practice, philosophy, service level or legal standard of the Department.

Complaints are broken down into three categories, Internal, External and Informal. Internal complaints are generated from within the Police Department by employees, generally supervisors. External complaints are those that come from citizens, businesses or organizations. Informal complaints are those from a citizen that do not involve any violation of Department policy or law, a complaint that has not been signed as required by law, and complaints about minor differences of opinion as to whether a traffic citation should have been written. Informal complaints are not investigated, but are maintained as documentation of a complaint being made.

Yearly Incidents by Type

Incident Type	2007	2008	2009	2010	2011	2012
External complaints	66	64	52	55	34	16
Informal complaints	-	94	50	28	47	41
TOTAL CITIZEN COMPLAINTS	-	158	102	83	81	57
Internal complaints	28	27	22	43	49	31
TOTAL ALL COMPLAINTS	-	185	124	126	130	88

Investigated complaint allegations are given a disposition, which is the final outcome or conclusion of fact of the investigation. Each formal complaint will be classified in one of the following ways:

- Exonerated: the alleged actions of the member occurred; however such actions were proper and lawful.
- Not Sustained: insufficient evidence was found to indicate a violation of Department rules.
- Sustained: the allegation is supported by sufficient evidence to indicate a violation of Department rules.
- Unfounded: the allegation is found to have no basis or is false.
- Administratively Closed: the investigation could not be completed and a disposition determined.

In 2012 Joliet Police officers made 8,241 arrests, responded to 96,278 calls for service of which 14,280 were traffic stops, and investigated 5,429 criminal cases. Complaints were made in 0.05% of the 101,707 documented citizen contacts. Listed below is the total number of complaints with sustained allegations and the discipline for those violations.

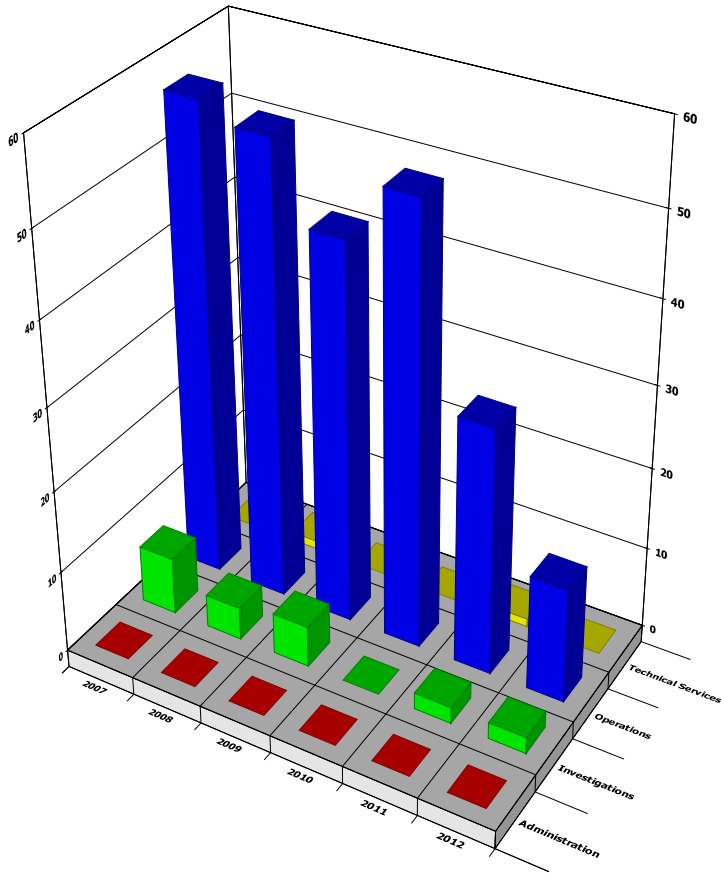
Sustained Complaints

Incident Type	Received	Completed	Sustained	% Sustained
External Investigation	16	16	5	31%
Internal Investigation	31	31	24	77%
TOTALS	47	47	29	62%

Discipline Imposed

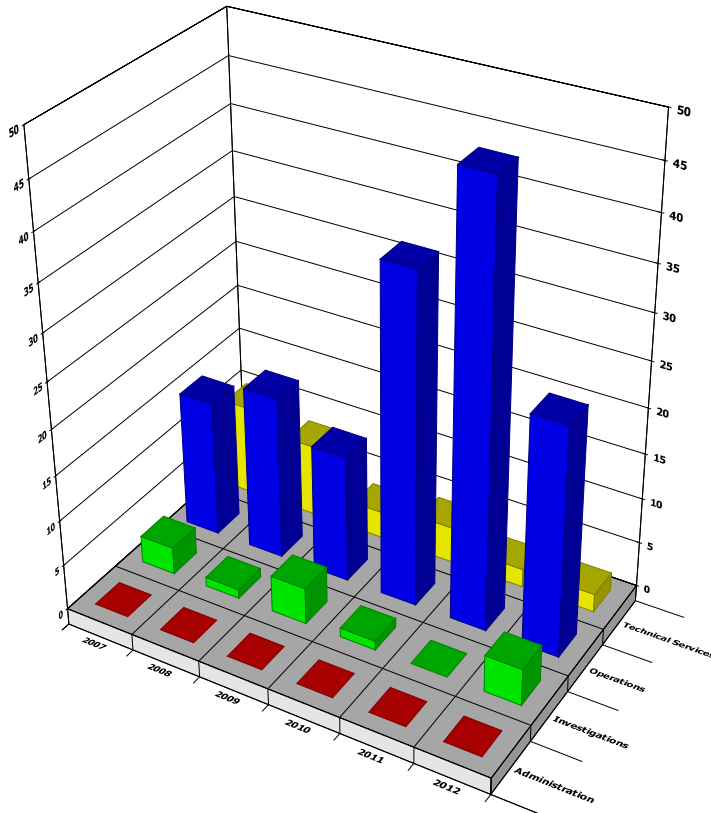
Action Taken	Count	% of Total
Termination	3	6%
Resigned prior to Termination	1	2%
Suspension	12	25%
Retired prior to discipline	1	2%
Written Reprimand	10	21%
Oral Reprimand	2	4%

**EXTERNAL INVESTIGATION INCIDENTS BY DIVISION
6 YEAR TREND**



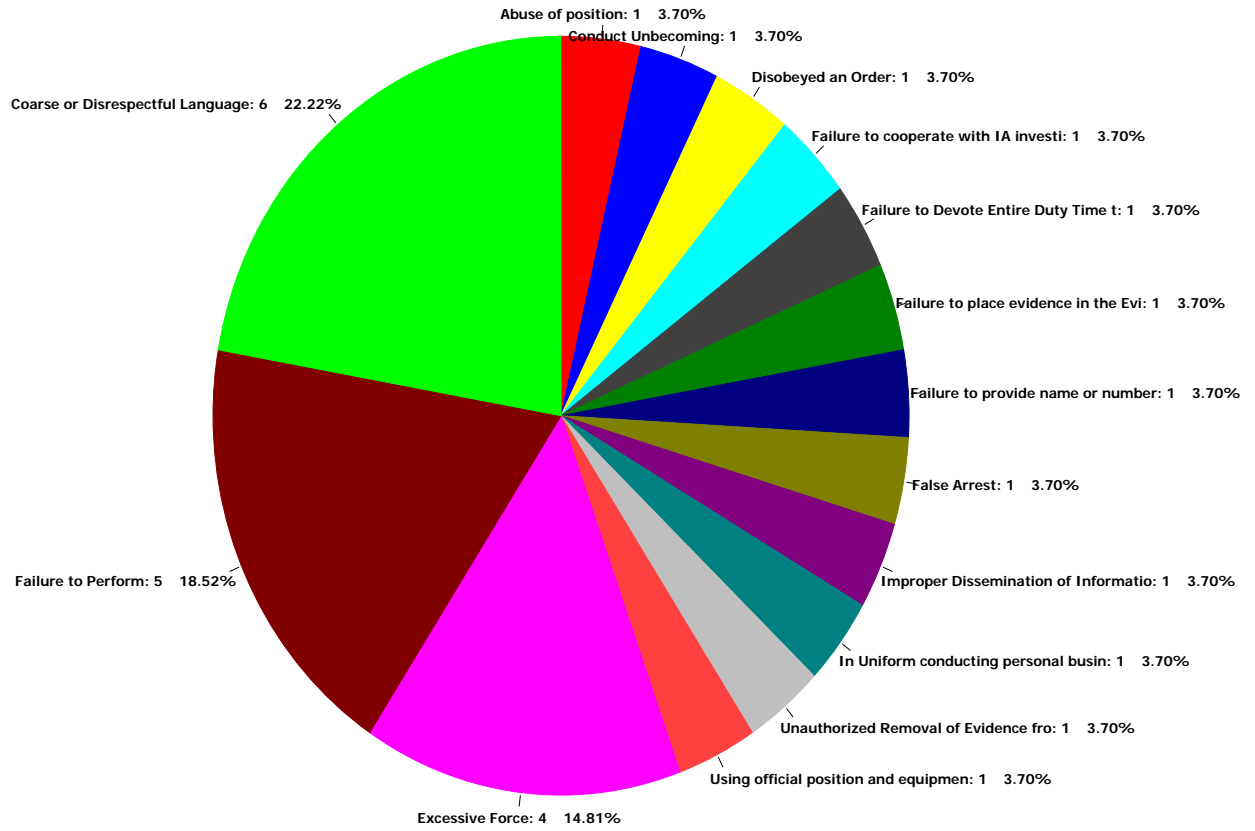
- Administration
- Investigations
- Operations
- Technical Service

**INTERNAL INVESTIGATION INCIDENTS BY DIVISION
6 YEAR TREND**

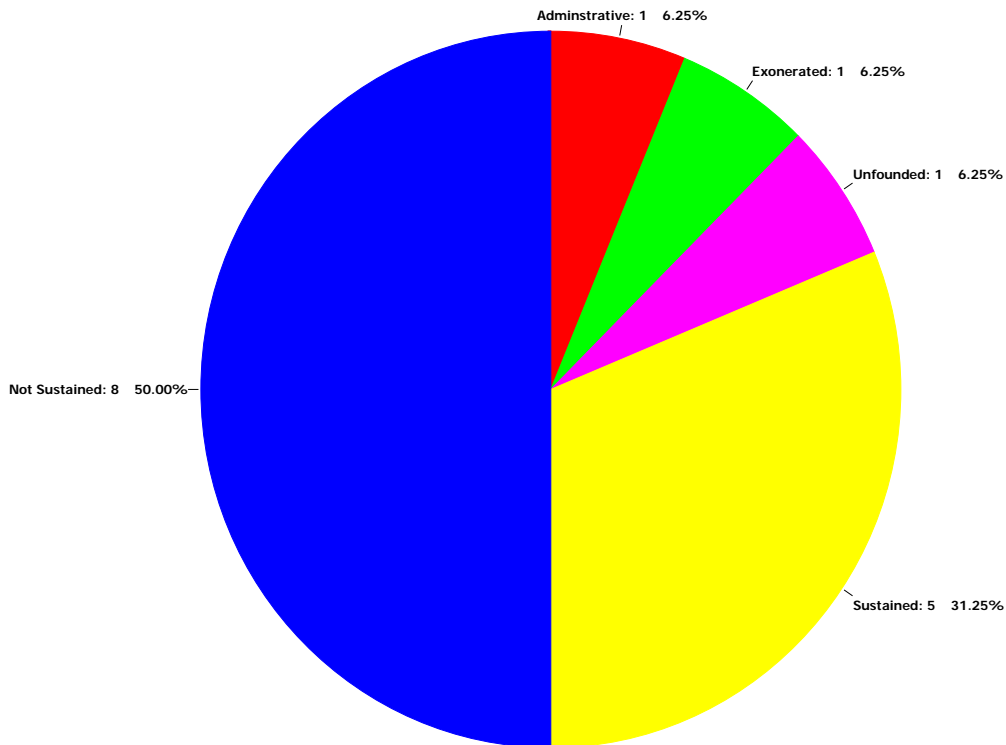


- Administration
- Investigations
- Operations
- Technical Service

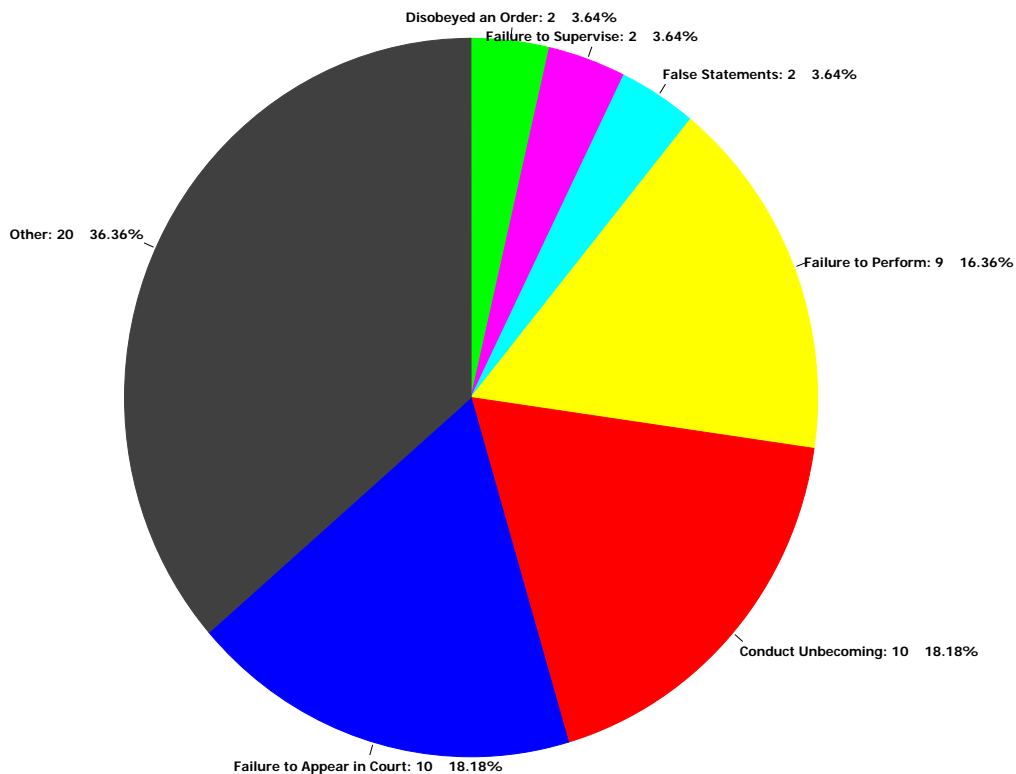
External Investigation incidents received between Jan 1, 2012 - Dec 31, 2012
By Allegation



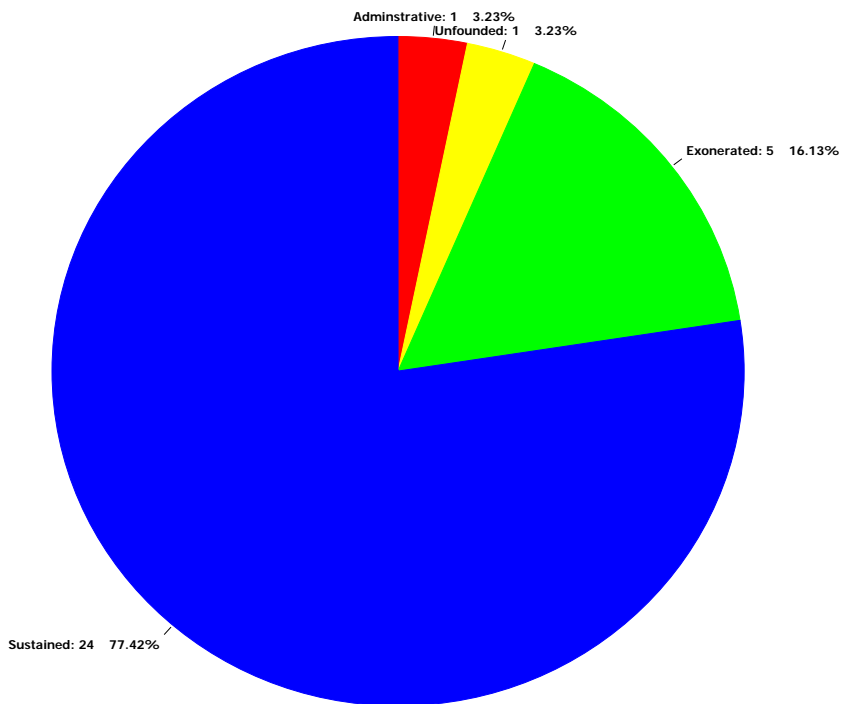
External Investigation incidents received between Jan 1, 2012 - Dec 31, 2012
By Disposition



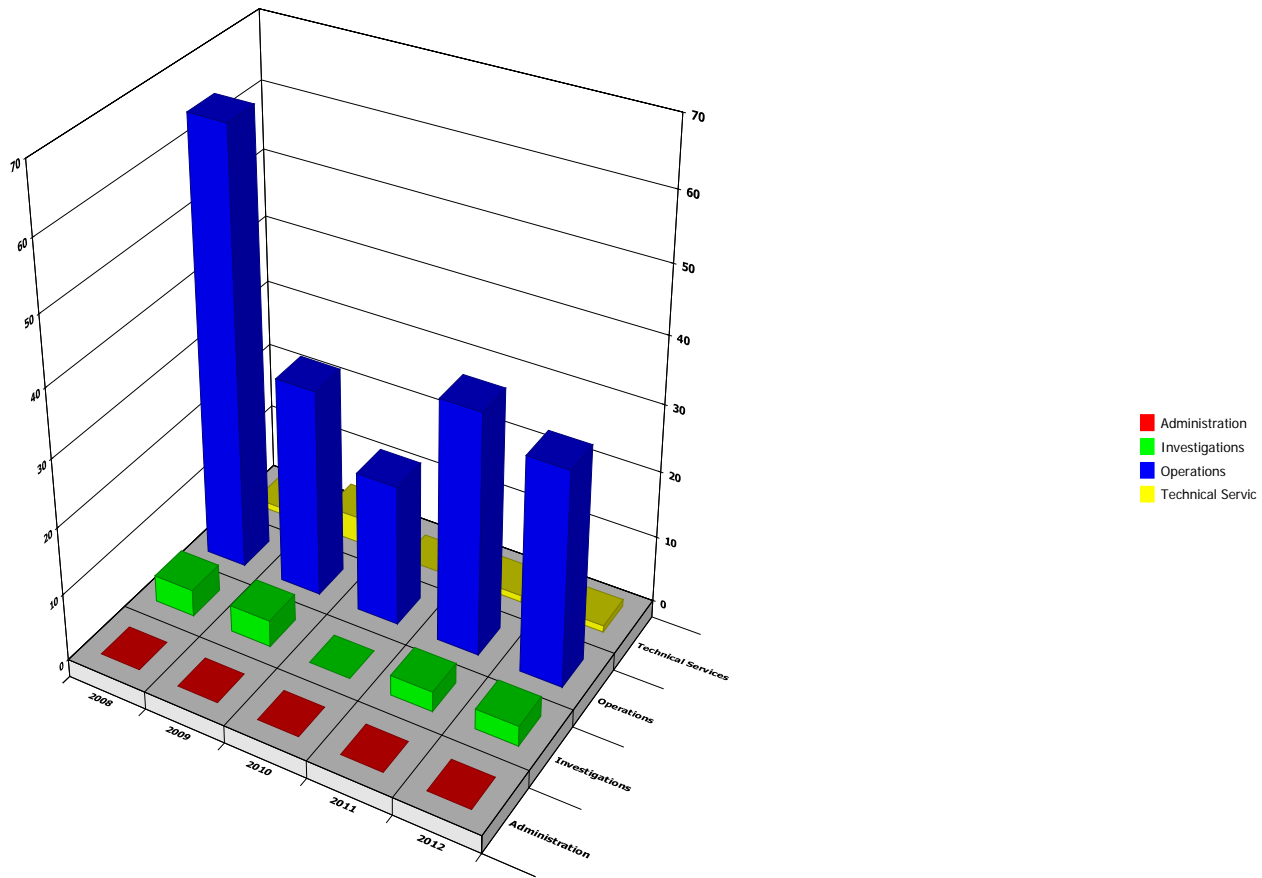
Internal Investigation incidents received between Jan 1, 2012 - Dec 31, 2012
By Allegation



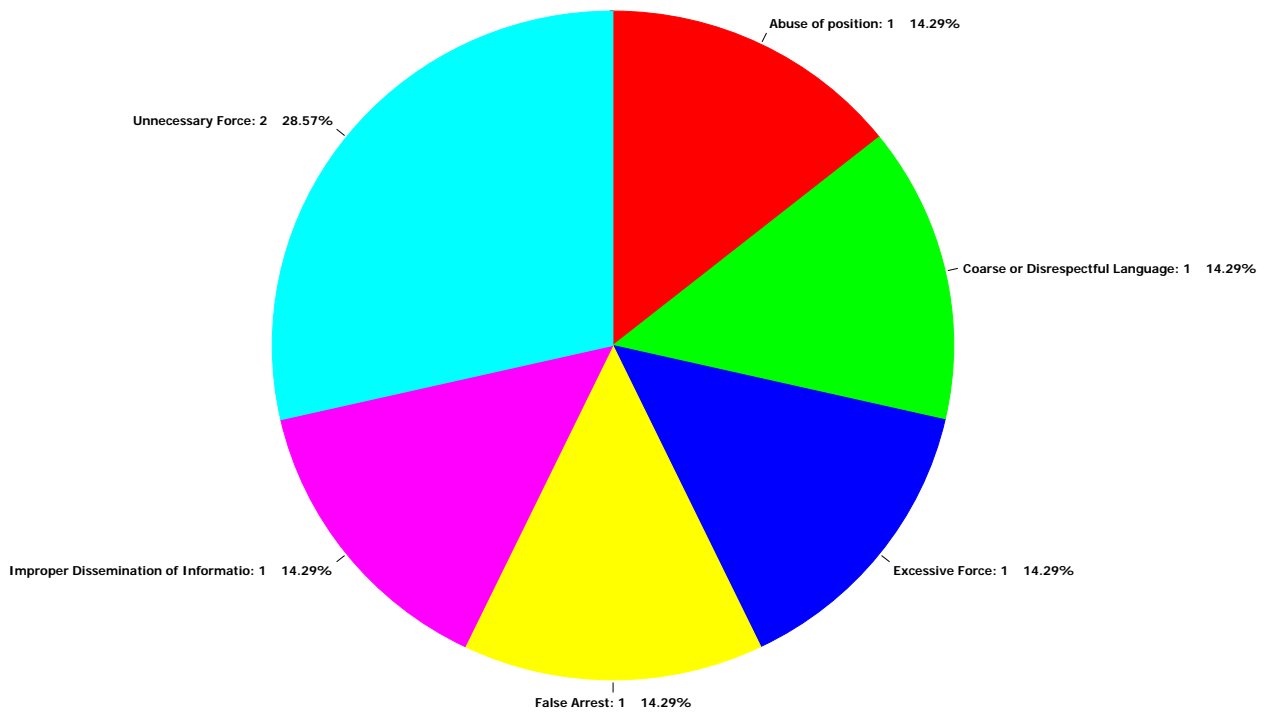
Internal Investigation incidents received between Jan 1, 2012 - Dec 31, 2012
By Disposition



**INFORMAL COMPLAINT INCIDENTS BY DIVISION
5 YEAR TREND**



**Informal Complaint incidents received between Jan 1, 2012 - Dec 31, 2012
By Allegation**

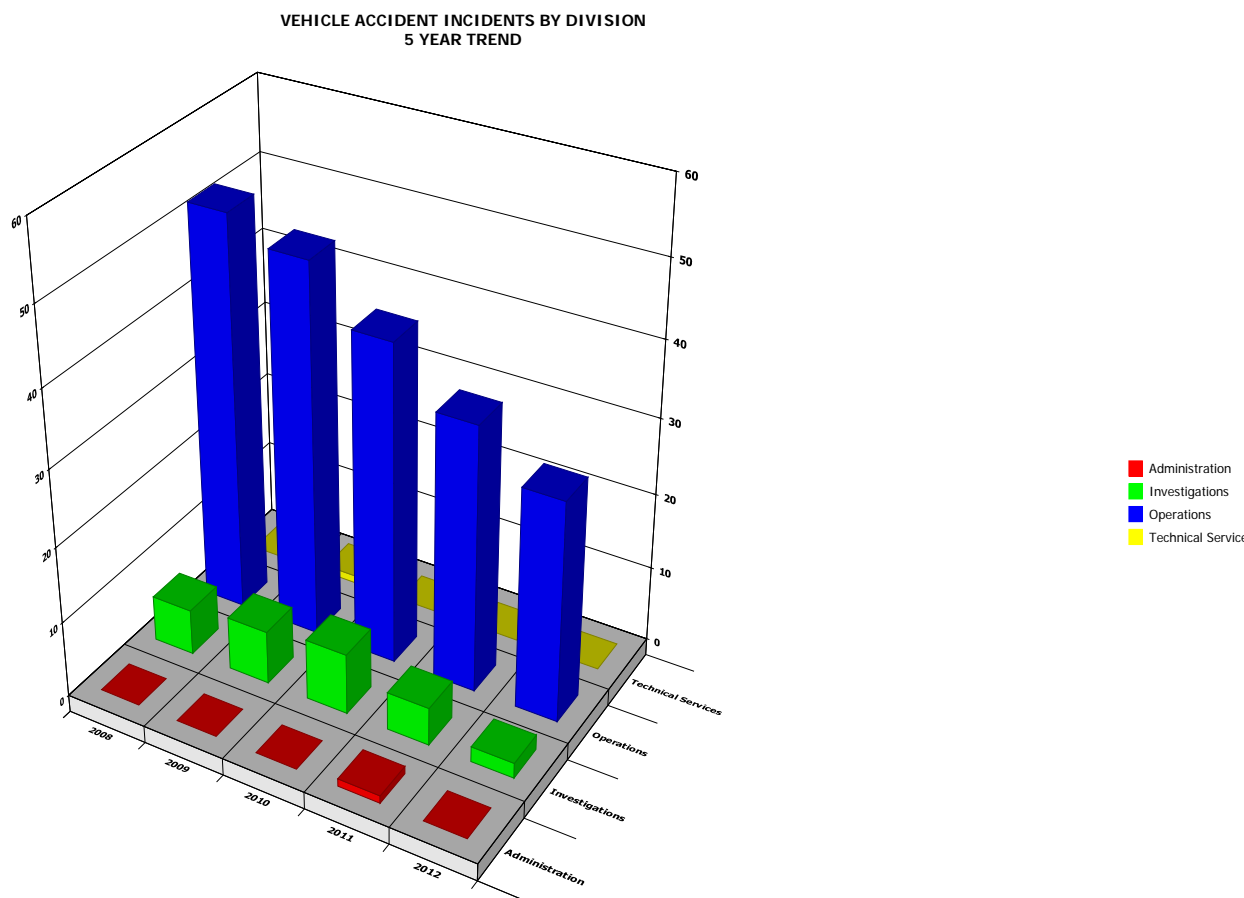


Other Statistical Tracking

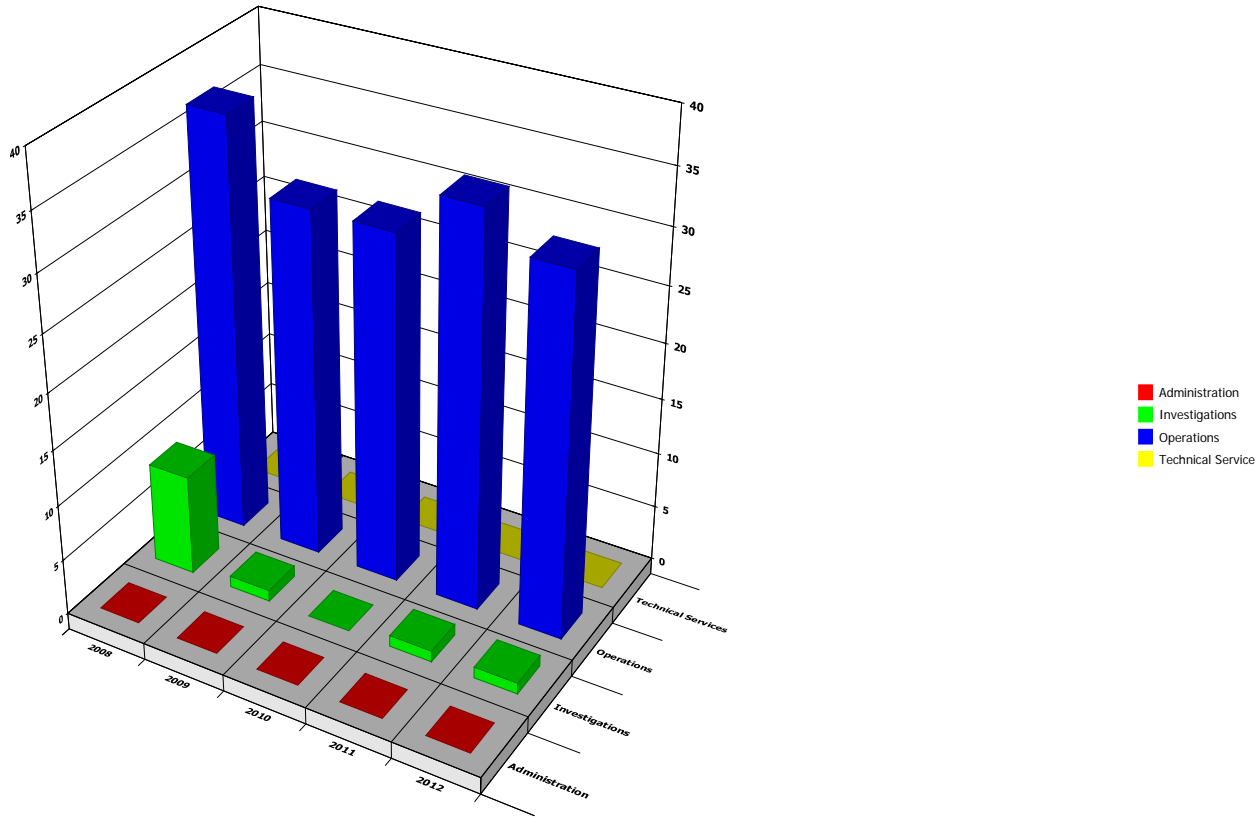
There are incidents that are maintained for statistical purposes to review officer performance, but are not investigated by the Internal Affairs Unit. There may be a review of the incidents or an investigation by another unit. These incidents are listed as non-investigative in terms of an Internal Affairs investigation. Accidents and Pursuits are reviewed by the Safety Review Board. Use of Force incidents are reviewed by the officers' immediate supervisor and Division Commander. Use of Force incidents involving injury to a citizen are reviewed by the officers' immediate supervisor, Watch Commander, Division Commander and Deputy Chief. Internal Affairs does process any discipline or formal complaints that may arise from any non-investigative incident. Internal Affairs conducts the Department random drug testing and investigates any positive results. The Internal Affairs Unit receives copies of lawsuits brought against Department members and reviews the lawsuits for any credible violations of Department policy. A summary of those non-investigative incidents is listed below.

Non-Investigative Incidents by Type

Incident Type	2008	2009	2010	2011	2012
Accidents	64	62	56	49	39
Pursuits	46	32	31	36	33
Lawsuits	12	12	7	16	7
Drug Test	-	-	31	0	39
Use of Force	254	346	325	255	189



VEHICLE PURSUIT INCIDENTS BY DIVISION
5 YEAR TREND

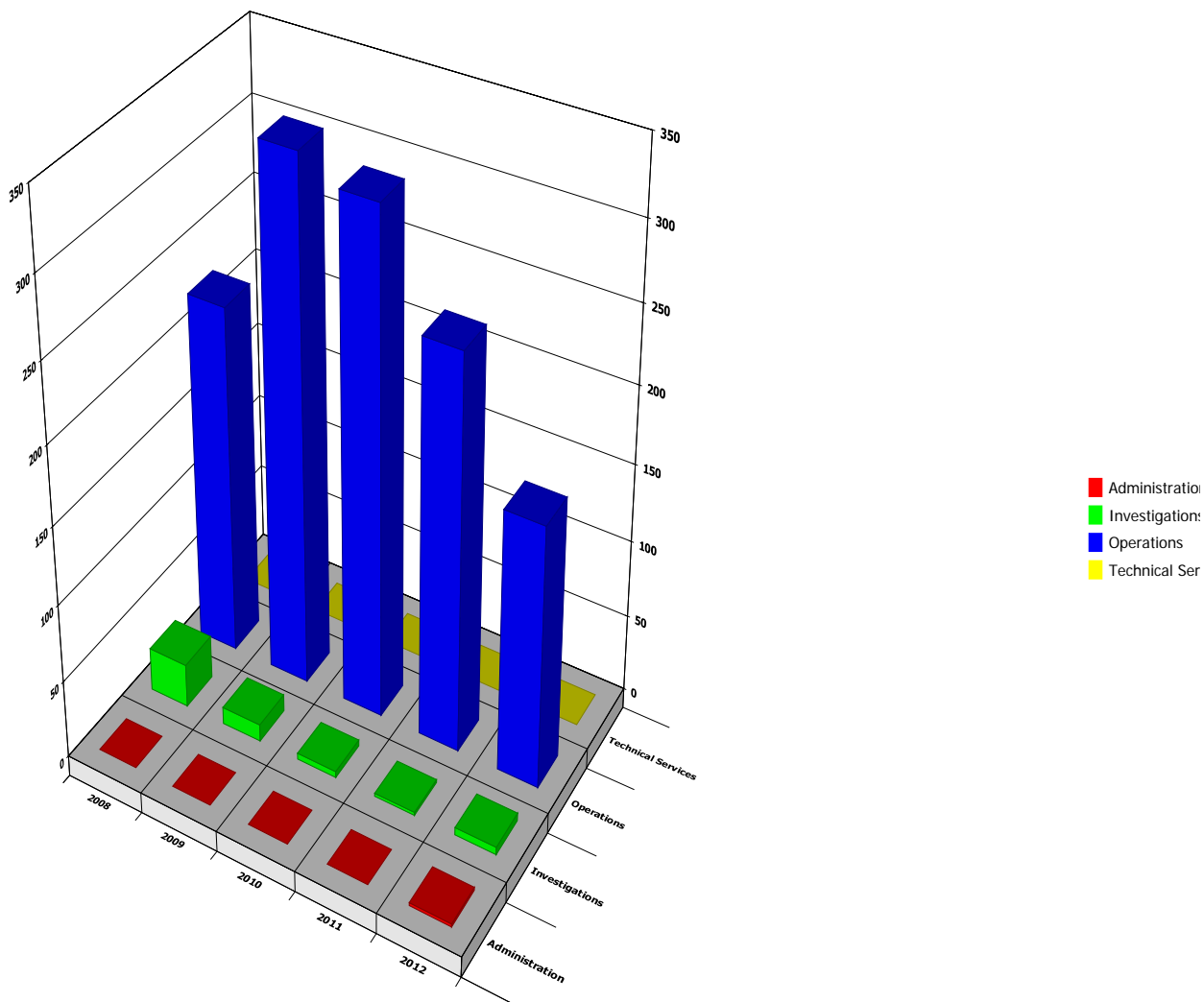


Use of Force

There were 189 instances of officers using force in 2012. The Joliet Police Department had 96,278 calls for service, 8,241 arrests, and 5,429 investigations. Joliet Police Officers used force in 2.28 % of the arrests made and force was used in 0.18% of the time in 101,707 documented contacts with citizens. The use of force totals include force used on the same person by multiple officers. 3.7% of use of force incidents resulted in a citizen complaint.

The following graphs show the five (5) year trend in Use of Force and the type of force used during incidents which may include multiple types of force during one incident.

**USE OF FORCE INCIDENTS BY DIVISION
5 YEAR TREND**



NOTE: Computerized database started in beginning of 2008, thus some data is incomplete prior to 2008. Use of Force incidents prior to 2009 were documented per incident rather than each individual use of force. Prior to 2009 if multiple uses of force were from the same incident it counted as only one use of force. Now each individual use of force is counted during the incident. That is the reason for the large tally discrepancy between 2008 and 2009.

Use of force incidents received between Jan 1, 2012 - Dec 31, 2012
By Type of force used

